



◀LENI'S KITCHEN + BAR

# Private Dining & Events







Cooking in Yarn



# Functions at Eleni's



We have 2 banquet options to choose from for a sit down event.

## Dimitri's Banquet \$66

### **MIXED DIPS: TZATIKI, TARAMA, MELINTZANSOLATA, TYROKAFTERI**

Served with house made crusty bread

### **SAGANAKI**

Grilled Greek Kefalograviera cheese with lemon

### **GREEK SALAD**

Lettuce, Tomato, Onion, Cucumber, Olives, Greek Feta

### **MEAT PLATTER**

Lamb & Chicken Gyros, Lamb Cutlets, Pork Kalamakia, Greek Sausage, Greek Meatballs

### **ROASTED LEMON POTATOES**

### **GREEK COFFEE & TEA**

## Eleni's Banquet \$76

### **MIXED DIPS: TZATIKI, TARAMA, MELINTZANSOLATA, TYROKAFTERI**

Served with house made crusty bread

### **SAGANAKI**

Grilled Greek Kefalograviera cheese with lemon

### **FLORINIS PIPPERIES**

Fire roasted red peppers with mint and feta

### **SEAFOOD PLATTER**

Chargrilled Spencer Gulf King Prawns, Fried Calamari, Chargrilled Rockling Fillets

### **GREEK SALAD**

Lettuce, Tomato, Onion, Cucumber, Olives, Greek Feta

### **MEAT PLATTER**

Lamb & Chicken Gyros, Lamb Cutlets, Greek Sausage, Greek Meatballs

### **ROASTED LEMON POTATOES**

### **CHEF'S SELECTION DESSERT PLATTER**

### **GREEK COFFEE & TEA**

Kids 12 and under can order from our kids or à la carte menu. We can cater for all dietary requirements.

You are more than welcome to add any extras from our regular dine-in menu.

**Grazing Table additional \$25pp**





# Canapé Menu



Minimum order for 20 people, Private Functions Only.

## PACKAGE A: \$50pp

4 hot and cold canapés, 2 substantial, 1 dessert

## PACKAGE B: \$65pp

6 hot and cold canapés, 2 substantial

## PACKAGE C: \$85pp

7 hot and cold canapés, 2 substantial, 1 dessert

## DELUXE PACKAGE: \$115pp

12 hot and cold canapés, 2 substantial, 2 dessert

### Canapés: Cold

PICKLED OCTOPUS (GF)

DOLMADAKIA (V • GF)

BUTTER LEEK LOBSTER  
BILLINI

DIPS WITH PAXIMADI  
- TZATZIKI (VG)  
- TARAMA  
- MELINTZANOSALATA  
(V • GF)

KINGFISH CEVICHE  
WITH CHILLI OIL

SALMON GRAVALAX

WATERMELON, FETA &  
PROSCUITTO

### Canapés: Hot

CHARRED OCTOPUS  
(GF)

CHARRED LOUKANIKO

ELENI'S CHIPS (VG • GF)

OUZO MEATBALLS

CHEESE CROQUETTE  
(VG)

FRIED CALAMARI

ZUCCHINI FRITTER (VG)

SEAFOOD CROQUETTE

PRAWN AND CHEESE  
CROQUETTE

SPANAKOPITA (VG)

TIROPITA (VG)

RARE ROAST BEEF WITH  
GARLIC CROUTONS

### Substantial

LAMB CUTLET (GF)

LAMB SKEWER (GF)

CHICKEN SKEWER (GF)

PORK SKEWER (GF)

CHARRED SPENCER  
GULF KING PRAWNS  
(GF)

PRAWN COCKTAIL (GF)

CHICKEN TENDERS

BEEF SLIDERS

CHARRED FISH WITH  
CHIPS (GF)

FRIED FLATHEAD TAILS  
WITH CHIPS

GYROS WITH CHIPS  
& PITA (GFO)

HERVEY BAY SCALLOP  
(GF)

### Dessert

BAKLAVA (VG)

GALAKTOBOUREKO  
(VG)

PORTOKALOPITA  
(VG)

CHOCOLATE CAKE  
(VG • GFO)

CHEESECAKE  
(VG • GFO)

GF — GLUTEN-FREE  
GFO — GLUTEN-FREE OPTION  
VG — VEGETARIAN  
V — VEGAN  
VO — VEGAN OPTION



# Beverage Packages



We have two beverage packages standard and deluxe. Otherwise you are more than welcome to have a bar tab, set a limit and top up as you wish.

The drinks package for dinner begins from 5pm and ends at 10pm. Every additional hour from 10pm is charged at \$15 per guest.

The drinks package for lunch begins at 11.30am and ends at 3pm. Every additional hour from 3pm is charged at \$15 per guest.

Drink Package	Price
<b>BASIC DRINKS PACKAGE</b> A selection of 2 x white wines, 2 x red wines, beer, assorted postmix soft drinks and orange juice.	\$30pp
<b>DELUXE DRINKS PACKAGE</b> A selection of premium sparkling, premium white and red wines, beer, glass bottle Coca Cola and Greek soft drinks.	\$50pp

Upgrades (the below are additional options that can be added to your chosen Drinks Package)	
<b>EXTRA BEERS</b> Add 2 additional Imported Beer	Additional \$2.5pp
<b>BASIC SPIRITS</b>	Additional \$25pp
<b>DELUXE SPIRITS</b>	Additional \$30pp
<b>CHAMPAGNE</b> NV Champagne Taittinger Brut	Additional \$50pp



# Basic Booking Information



## LICENSE

The venue is licensed until 12am.

## PRIVATE FUNCTIONS

Lunch bookings may arrive at 11.30am and end by 3pm. Additional \$5 will be charged per guest for extending this time for every half an hour. Dinner Reservations may arrive at 5pm and must end by 11pm.

## CAKE CUTTING

Complimentary cake cutting if your cake is purchased through Cakes by Thierry otherwise there is a cakeage charge of \$3.5 per slice.

Please visit Cake Shop Yarraville (@cakesbythierry) • Instagram photos and videos or [cakesbythierry.com.au](http://cakesbythierry.com.au)

## FACILITIES AND FEATURES

Projector, Microphone, and Speaker System.

We can also arrange our Greek band or DJ if you would like for an additional charge.

Plate smashing and flower throwing is also available at an additional cost.

## BOOKING HOLDS

Tentative bookings are held for 7 days.

## CANAPÉS ON ARRIVAL

If you would like to add a special touch, we can add canapés on arrival for your guests, from 5pm.

## PAYMENTS

Payments can be made via bank transfer or cash. Credit card payments are also welcome, however, incur a 1.4% surcharge.

## SURCHARGES

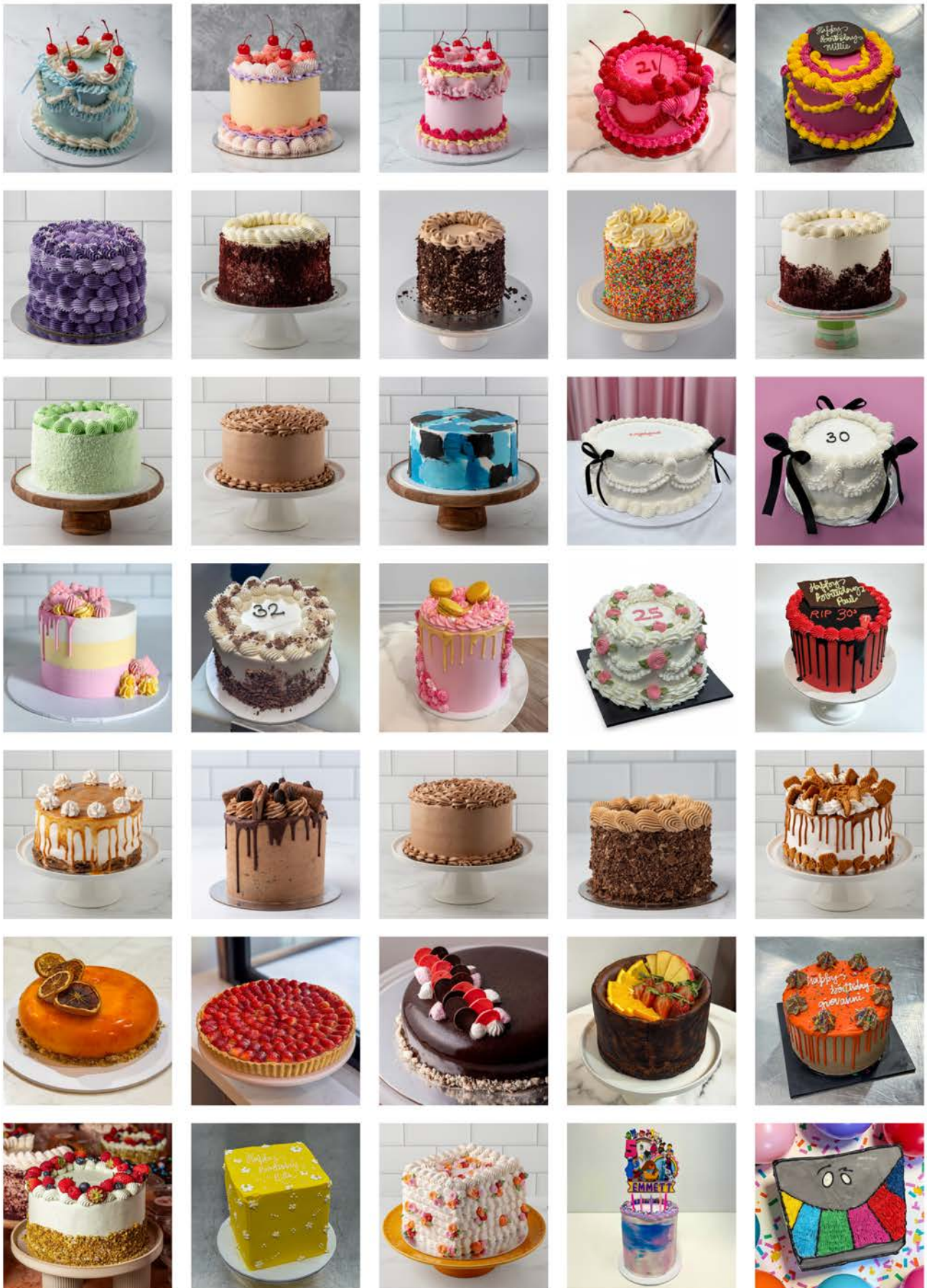
Surcharge for all public holidays applies at 15%.

## BOOKING ENQUIRIES

For any booking enquiries please email [info@eleniskitchen.com.au](mailto:info@eleniskitchen.com.au) or call us on 0467 508 991



# Sweet Offerings - Cakes by Thierry







## Anatoli's Lounge - upstairs

Seats up to 16 guests



DAY	LUNCH	DINNER
Friday	\$1000	\$1000
Saturday	\$700	\$1000
Sunday	\$1000	\$700





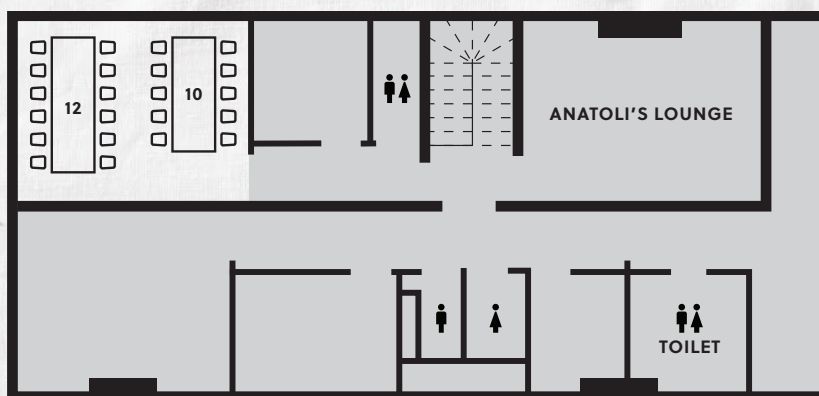


## Thierry's Champagne Room - upstairs

Seats up to 22 guests



DAY	LUNCH	DINNER
Friday	\$1000	\$1000
Saturday	\$1000	\$1000
Sunday	\$1000	\$1000







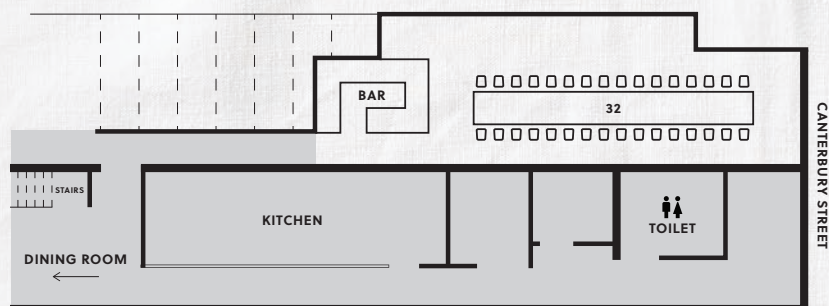
# Dimitri's Garden - downstairs

Seats up to 44 guests or 60 guests cocktail

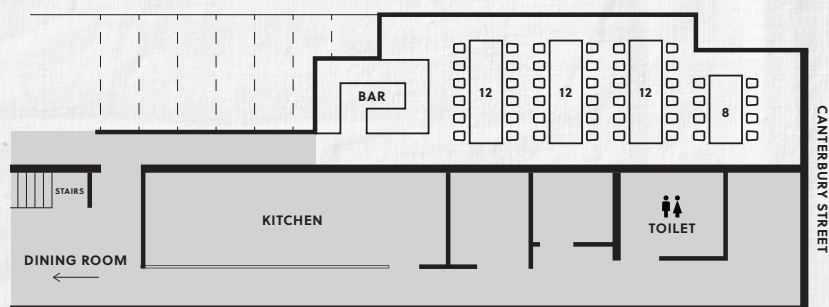


DAY	LUNCH	DINNER
Friday	\$1500	\$3000
Saturday	\$2000	\$4000
Sunday	\$3000	\$2500

CONFIGURATION ONE



CONFIGURATION TWO







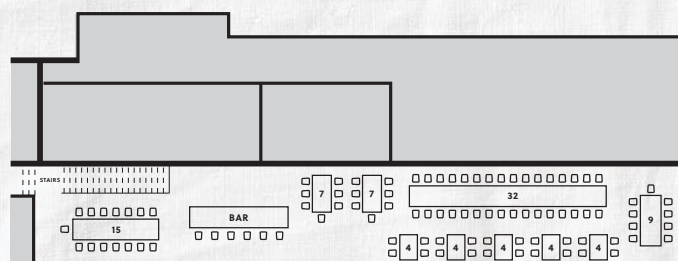
# Main Dining Room - upstairs

Seats up to 90 guests or 110 guests cocktail

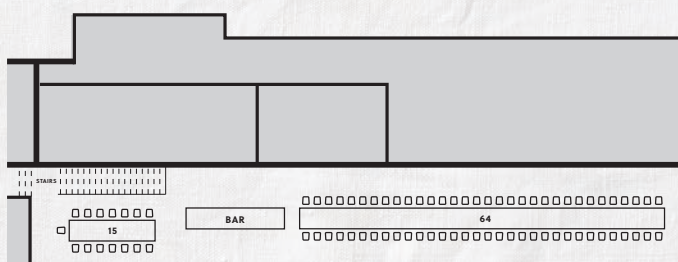


DAY	LUNCH	DINNER
Friday	\$2500	\$4000
Saturday	\$3000	\$6000
Sunday	\$4000	\$3000

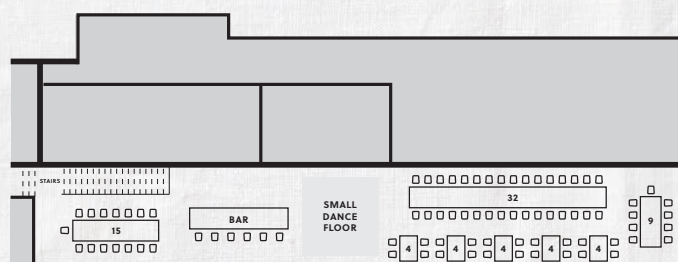
CONFIGURATION TWO



CONFIGURATION ONE



CONFIGURATION THREE





# Terms & Conditions



## Pre-Payment Installments and Cancellation Fee

### Instalments

Pre-Payment Schedule of Projected Function Costs	Total % of Projected Function Costs that the Hirer must pay by the applicable date
On Agreement	10%
4 days out from Hire Period	50%

### Cancellation Fee

Days out from Event that Cancellation occurs	Total % of Projected Function Costs that the Hirer must pay at the applicable date
< No Notice	100%



# Looking for a gift to make your event a little extra special?

Consider adding a copy of the Ela na Fáme cookbook for each of your guests.



Please enquire with our team. Alternatively copies are also available to purchase at [eleniskitchen.com.au/cookbook/](http://eleniskitchen.com.au/cookbook/)





28 Anderson St Yarraville 3013

+ 61 0467508991

[info@eleniskitchen.com.au](mailto:info@eleniskitchen.com.au)

[eleniskitchen.com.au](http://eleniskitchen.com.au)

